

The Continental Elite[®] Gauge

Is Your Belt Worn?

In today's world of advanced EPDM polymers, serpentine belts are wearing out before visible signs indicate replacement is needed. Determine when to replace your belt using the Continental Elite[®] Gauge.

The Elite[®] Gauge allows you to easily check three different types of wear on a serpentine belt:

Rib Wear

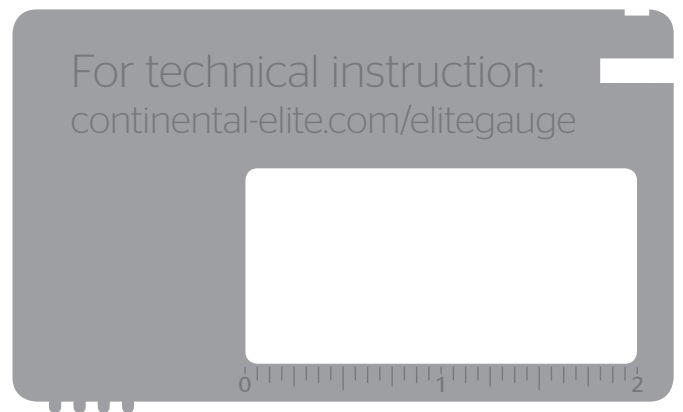
This is the most difficult wear to detect on a serpentine belt. It can come in the form of side or valley wear. Side wear is typically from misalignment and can be seen on one side only, and will repeat on each groove across the width of the belt. Valley wear is caused by abrasion of the pulley and debris over time.

Rib Cracks

Signs of rib cracks are indications that the belt is near retirement. If rib cracks happen prematurely and before the expected life of the belt, it may mean that your drive has excessive heat. This may be caused by a bad bearing on the drive.

Belt Thickness

The thickness of the serpentine belt is the easiest visual clue to see if your belt is worn, but it can be deceiving. The grooves of the serpentine belt are worn from abrasion during typical use.



The Elite[®] Gauge is the only tool you need to check the life of a serpentine belt.

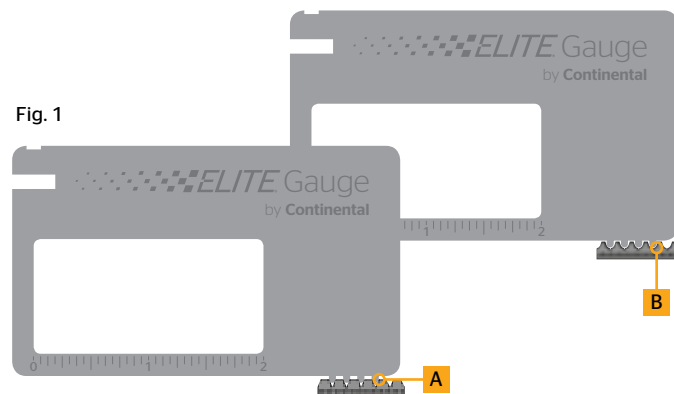
Check the Life of Your Belt

Detection 101

Rib wear detection

- › Place the Elite® Gauge in the ribs of the belt as indicated in Figure 1.
- › The Elite® Gauge is most efficient at 90 degrees to the belt.
 - › If you see light, then you still have wear left on the belt (see position A).
 - › If you do not see light, belt replacement is recommended (see position B).

Fig. 1



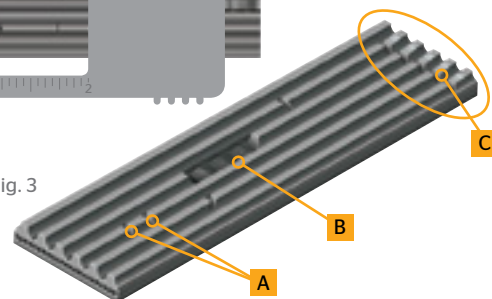
Rib crack detection

- › Place the Elite® Gauge so the 2 inch window is over a section of the belt as indicated in Figure 2.
- › If you have two or more rib cracks within the window, it may be time to replace the belt.
- › Other signs of wear that may require belt replacement include (Figure 3):
 - › Two cracks side by side in the same rib and within a half-inch of each other can lead to belt chunking within a short period of time (position A).
 - › Chunking around the circumference of the belt (position B).
 - › Three or more rib cracks are aligned across the belt width (position C).

Fig. 2



Fig. 3



Belt thickness detection

Use the thickness part of the Elite® Gauge. Try to fit the belt in the groove of the tool. If the belt fits in the groove, wear is occurring and replacement should be considered (Figure 4).

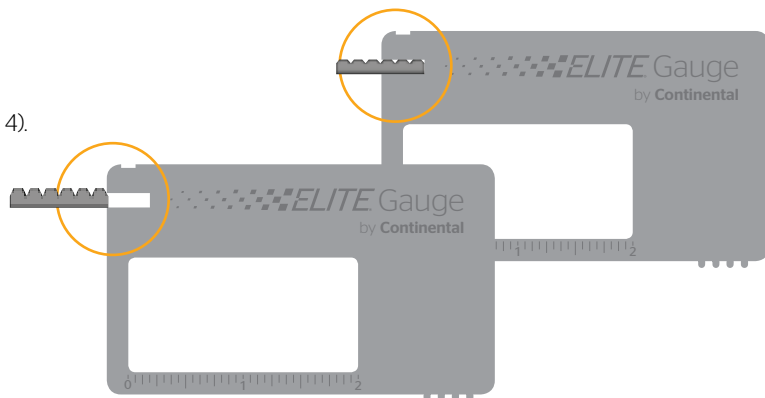


Fig. 4



Legal Notice

The content of this publication is not legally binding and is provided as information only. The trademarks displayed in this publication are the property of Continental AG and/or its affiliates. Copyright © 2014 ContiTech AG. All rights reserved.

Contact

ContiTech North America
Veyance Technologies, Inc.
703 S. Cleveland Massillon Road
Fairlawn, OH 44333-3023 U.S.A.

U.S.A. and Canada

1-800-869-0435
FAX 1-800-228-3148

Canada

(French only)
1-888-275-4397
FAX 1-888-464-4397

Mexico

(Within Mexico)
01-800-439-7373

(Outside Mexico)
+52-444-834-5803



20781703

continental-elite.com